



## Linking traits and markers: PCGIN mapping populations.

---

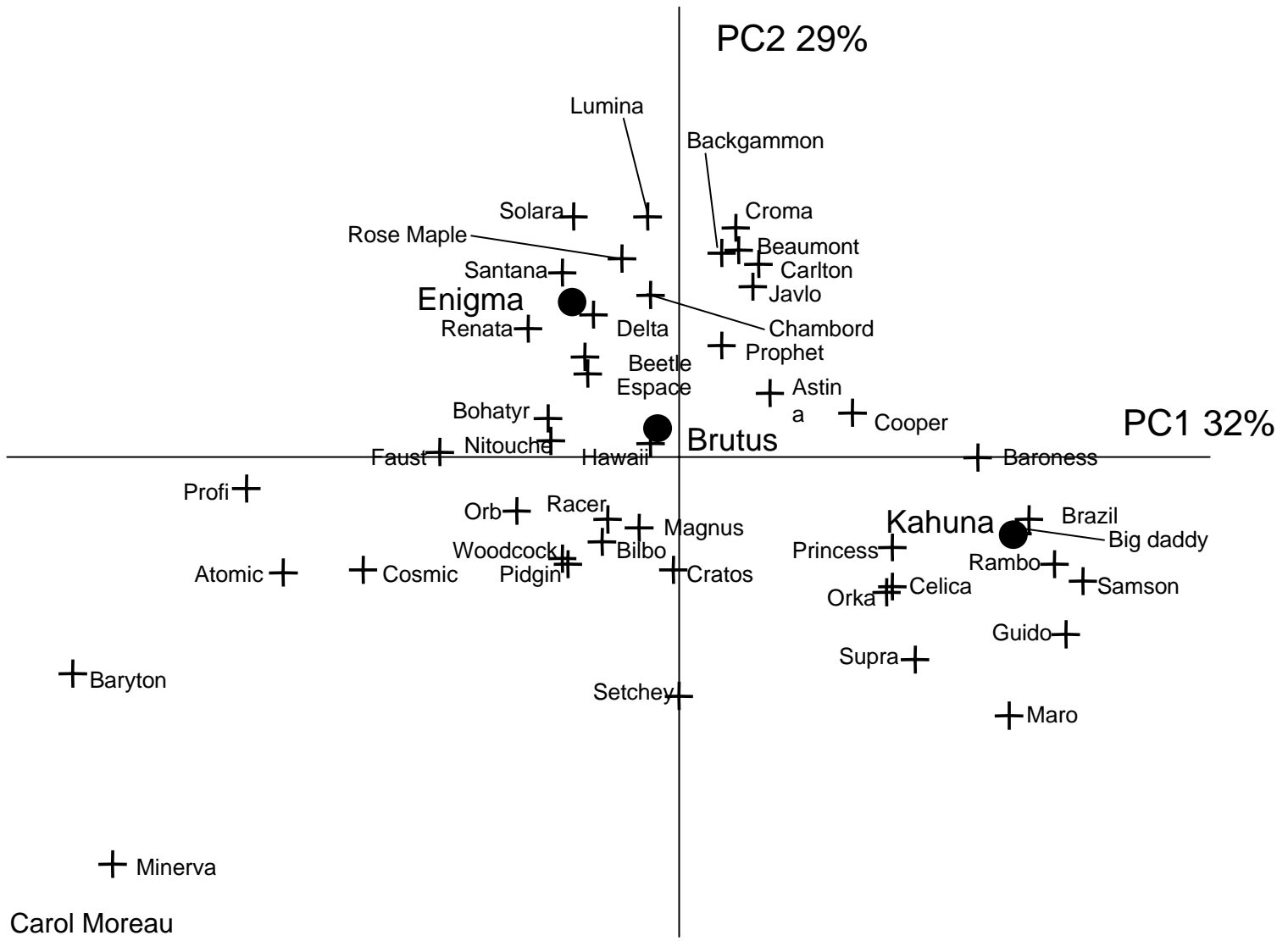


Seed was obtained from as many cultivars as possible for which there was NIAB trial data.

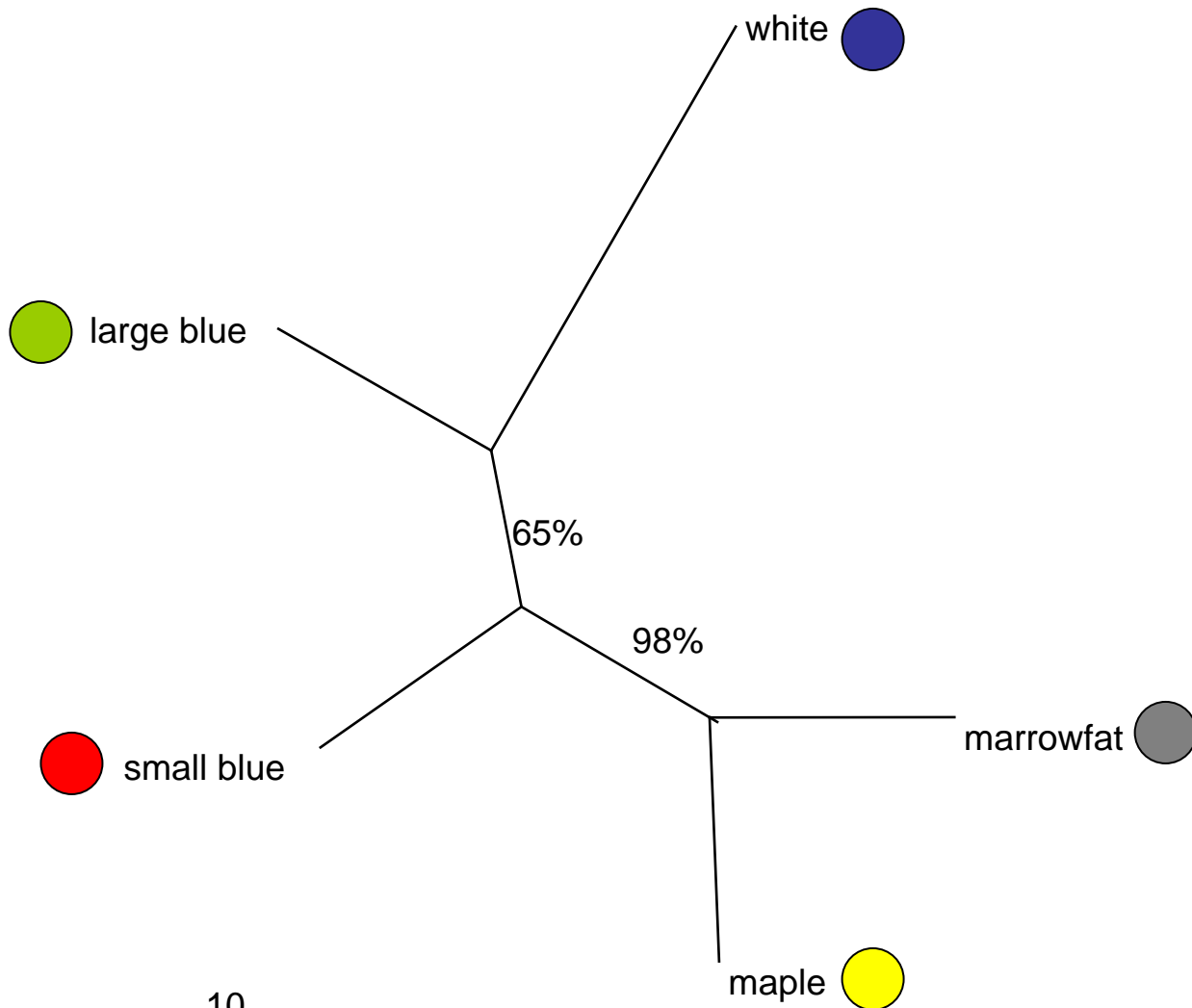
This resulted in a selection of 59 lines including 9 genetic stocks that are parents of existing recombinant inbred populations.

These were genotyped using PDR1-SSAPs and scored for 150 markers.

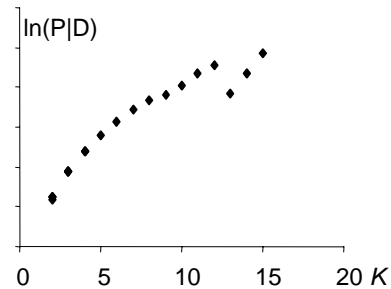
# Linking traits and markers: selection of PCGIN mapping population parents.



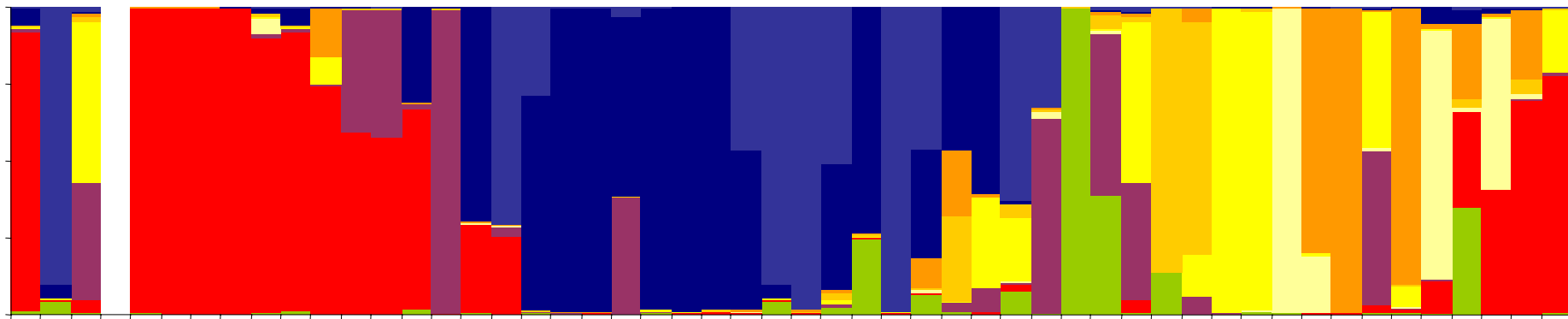
# Linking traits and markers: selection of PCGIN mapping population parents.



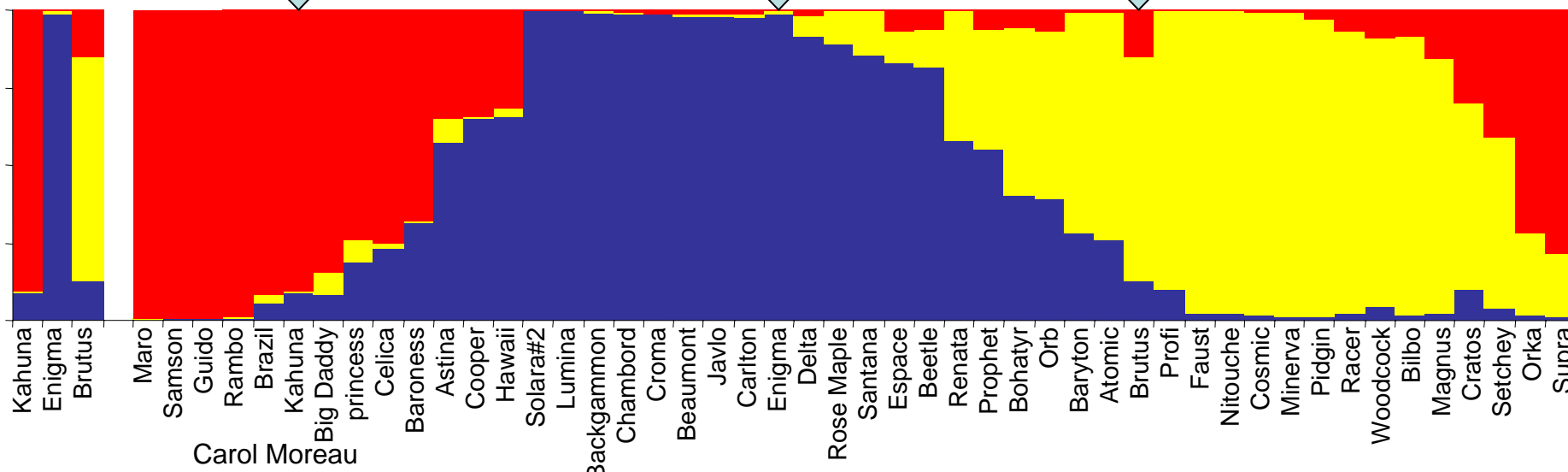
# Linking traits and markers: PCGIN mapping populations.



$K=9$



$K=3$



# Linking traits and markers:

---

## NIAB performance scores.

	yield	downy mildew	protein	standing ability
Enigma	+	+ / -	+	+
Brutus	+ / -	+	+ 3 <sup>rd</sup>	+ / -
Kahuna	+ 5 <sup>th</sup>	- 5 <sup>th</sup>	-	+ / -